

FSE BLOCKING UNIT

Automotive Industry

“ Pneumatic Lift System, For An Overhead Welding Application ”

Company: DaimlerChrysler Corporation
Detroit, Michigan

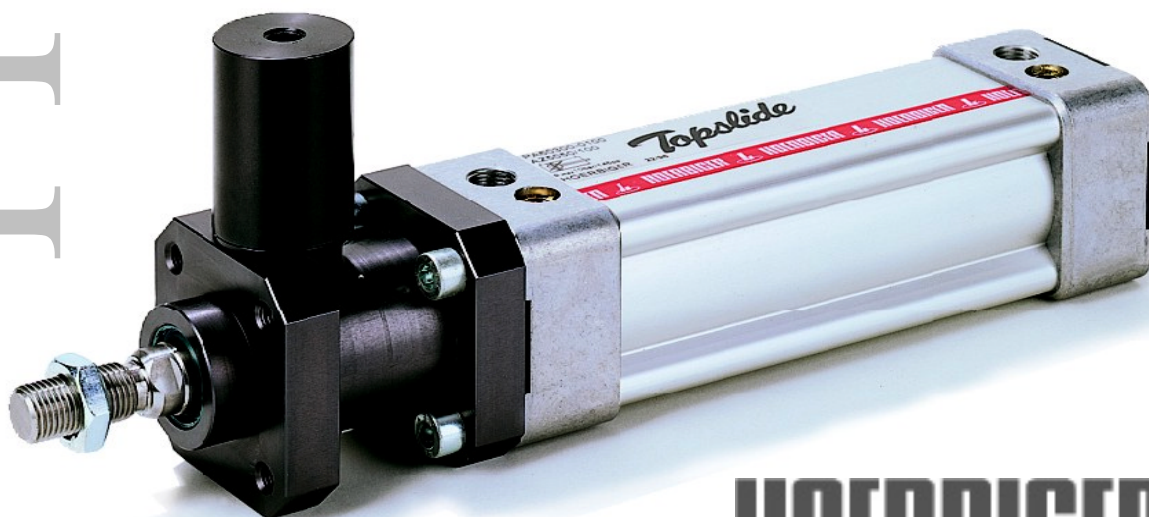
Product: AZ Cylinder w/ FSE Blocking Unit

Application: A DaimlerChrysler stamping plant manufactures hood and door panels for several different mid-sized vehicles. In one area of this facility, mounting brackets are welded to a subassembly. The machine performing this task utilizes an overhead lift system. For safety, the machine was designed using a rod type cylinder with an external locking unit. This area of the plant is particularly tough on components, due to high cycle rates and weld slag. Cylinder failure for this machine had increased dramatically over the past several years and DaimlerChrysler was looking to replace the existing blocking cylinder.

FSE Blocking Unit: An AZ cylinder package was integrated into an existing overhead lift system and was tested for several months. As part of the test, the FSE blocking unit was actuated twice during each cycle.

- the unit was subjected to a very harsh environment and was tested during standard 20 hour shifts. No degradation was found on the internal sealing material or on the FSE blocking unit.
- the AZ cylinder package is an ISO 6431 interchange and offers more flexibility than the current blocking cylinder.
- DaimlerChrysler is confident that the FSE blocking unit will withstand several million cycles without failure.

Hoerbiger-Origa Corporation
100 West Lake Drive
Glendale Heights, IL 60139
(630) 871-8300



HOERBINGER
ORIGA